

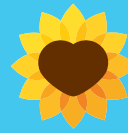
## What Should I Do If There Are Medications Left Over?

Please do not bring your unused medications back to East Cheshire Hospice. They should be taken back to your pharmacy. Explain that they are no longer needed and ask the pharmacist to dispose of them. If you are unable to do so, please tell your doctor or nurse and they can advise you what to do.

If you have been discharged from East Cheshire Hospice with a Syringe pump, this will be swapped once you get home by the District Nurse and they will arrange for it to be sent back to the Hospice.

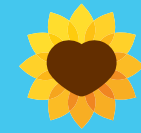
If you have been given a syringe pump at home by the District Nurses, this will be collected by the District Nursing Team when no longer in use.

If you have any questions you can speak to the Ward Manager Claire Barber or Sunflower Centre Manager Helen Henshaw, or you can always discuss with your Doctor, specialist palliative care nurse or District Nurse.



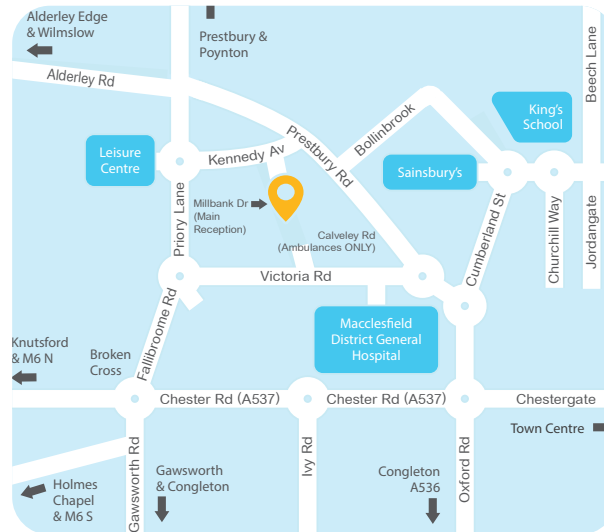
**East Cheshire Hospice**

Where people come to live



**East Cheshire Hospice**

Where people come to live



East Cheshire Hospice  
Millbank Drive  
Macclesfield  
Cheshire SK10 3DR

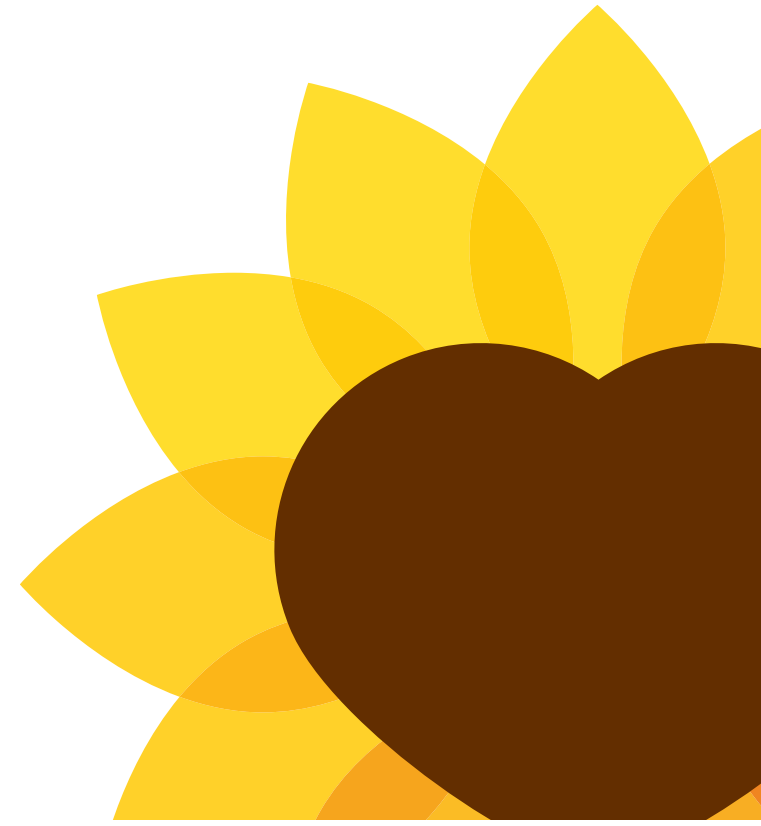
Main Reception: 01625 610364  
Sunflower Centre: 01625 665685  
IPU: 01625 610364  
Email IPU: [inpatient@echospice.org.uk](mailto:inpatient@echospice.org.uk)

[www.eastcheshirehospice.org.uk](http://www.eastcheshirehospice.org.uk)

IPU-28-0520

## ‘Just in Case’ Medications for Symptom Control

### Information for Patients, Carers & Families



## Introduction

This leaflet will provide you with the information about the medicines that may have been prescribed for you in injectable form. If you have any questions or concerns, please speak to your doctor or nurse.



## What Is 'Just In Case' Medication?

Sometimes doctors or nurses looking after you will give you a small supply of injectable medicines to keep at home, just in case you need them for symptoms you may experience in the future. These medicines are sometimes called 'Anticipatory Injectable Medicines' or 'Just in Case' medicines.

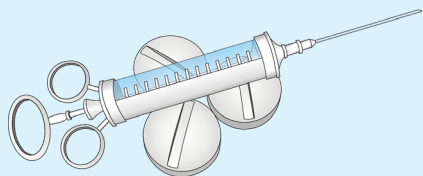
Keeping these medicines at home avoids any delays getting them prescribed and collected from a pharmacy especially at night or over a weekend if you should need them quickly.

## Which Medicines Might I Be Given?

The medicines supplied could include:

- ♥ **Morphine** or an alternative drug – to reduce pain and/or shortness of breath
- ♥ **Midazolam** – to help reduce and ease restlessness
- ♥ **Levomepromazine** – or an alternative anti-sickness drug to alleviate feelings of nausea or actual sickness
- ♥ **Glycopyrronium** – to reduce the saliva or secretions in the throat or chest that may cause noisy breathing

You may not have all of these medications supplied and you may have some not mentioned on the list. It will depend on your condition and symptoms. Your Doctor or Nurse will explain your medication to you.



## Why Are They Prescribed In Injectable Form?

You may be taking these medications as tablets or liquids already by mouth to manage your symptoms. Your doctor or nurse wants to make sure that if it becomes difficult to take your medications by mouth, that you can still receive the medication you need. An injection just under the skin is an alternative way for you to still receive the medicine.

## If I Am Taking Other Medicines What Happens To Those?

Your Doctor or Nurse will talk to you about your other regular medications if you are finding it difficult to swallow your medications. Some of them might be stopped completely or continued by the injection form instead. Some medicines may be adjusted depending on how you are and sometimes an alternative may be used instead.

## How Will I Receive The Injectable Medications?

A District Nurse, Specialist Palliative Care Team or a member of the Hospice @Home team will administer the medications to make sure your treatment is safe and effective. Medication cannot be administered by family members, carers or you.

Instead of having an injection each time you need it the nurse may set up a syringe pump which stays in place and gives you regular medication over the course of a 24-hour period. Syringe pumps deliver the medication at a regular rate and the nurses will visit you every day to renew its contents and adjust the medications according to your needs.



## Will I Experience Side Effects?

All medications have side effects. If you need any of these medications your doctor will discuss the possible side effects with you and will always look at ways to help prevent them. You can always include a family member or friend in this discussion if you wish. Written information is available in the information leaflet that comes with your medication. Please talk to your doctor or nurse if you are concerned and they will find an alternative plan if the medication does not suit you.

## What If I Need More Of The Medicines?

The nurse giving you these medicines will keep a check of how many you have left and will arrange for your GP to prescribe more if you are running low. A family member or carer will need to take the prescription to the pharmacy for them to supply what you need. If you or the person caring for you notice your supplies are running low, please check with the nurse that more have been ordered.

## How Should I Store These Medicines?

Often you will be given the medicines by the pharmacy or the Hospice and the District Nurse will supply a silver case which can be used for storage and will be left at your house. Within this case will be equipment for the administration of the medicines and there will be additional paper forms and records that will need to be kept with the box.

**As with any medicine it is important to follow these simple instructions:**

- Store at room temperature
- Store in a safe place out of reach of children
- Do not share your medications with anyone else. They have been prescribed for only you.